

Schutzkontakt-Anbaudose

Bestellnr. 11131

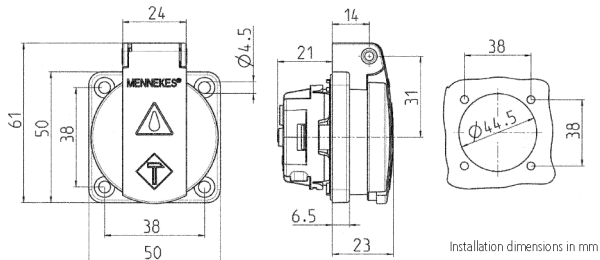


- French/Belgian system (NF)
- with hinged lid
- 3 plug-in terminals or 3 screw terminals as connecting terminals for 1.5 - 2.5 mm²

Technische Daten

Ampere	16 A
Pole	2 p+E
Volt	230 V
Anschlussstechnik	Schraubkontakt
Kontakt	standard
Schutzart	IP 44
Flansch	50x50 mm
Bohrloch	38x38 mm
Gewicht	46 g

Abmessungen



Drawing
1 MB 410

Dim. in mm